

MONTHLY MEMBERSHIP PROGRESS REPORT

LOCATION MINNESOTA

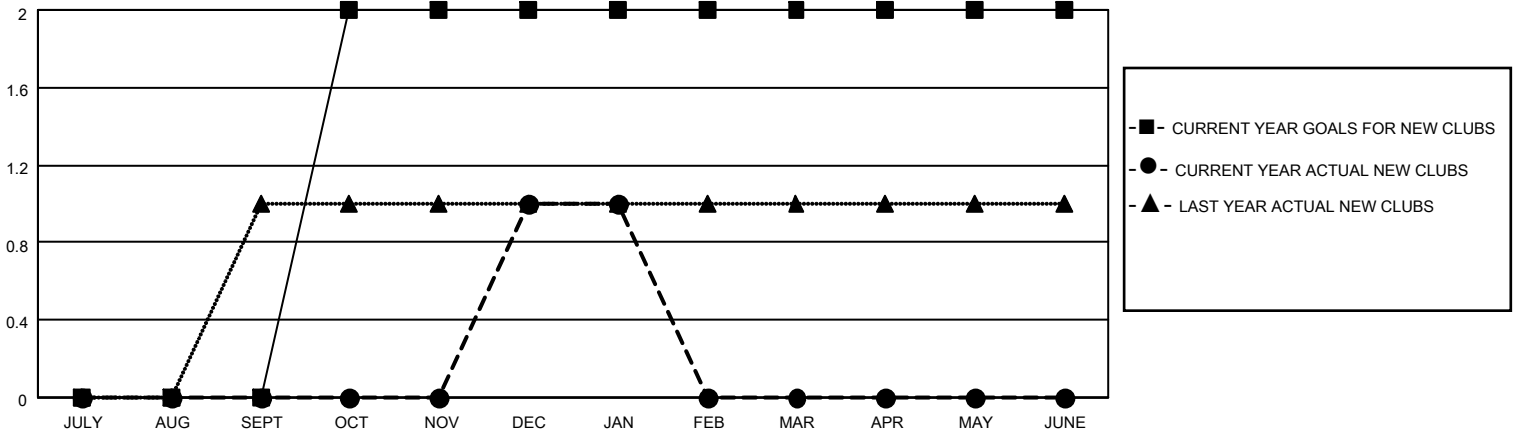
District 5M 1

Results as of: 1/31/2021

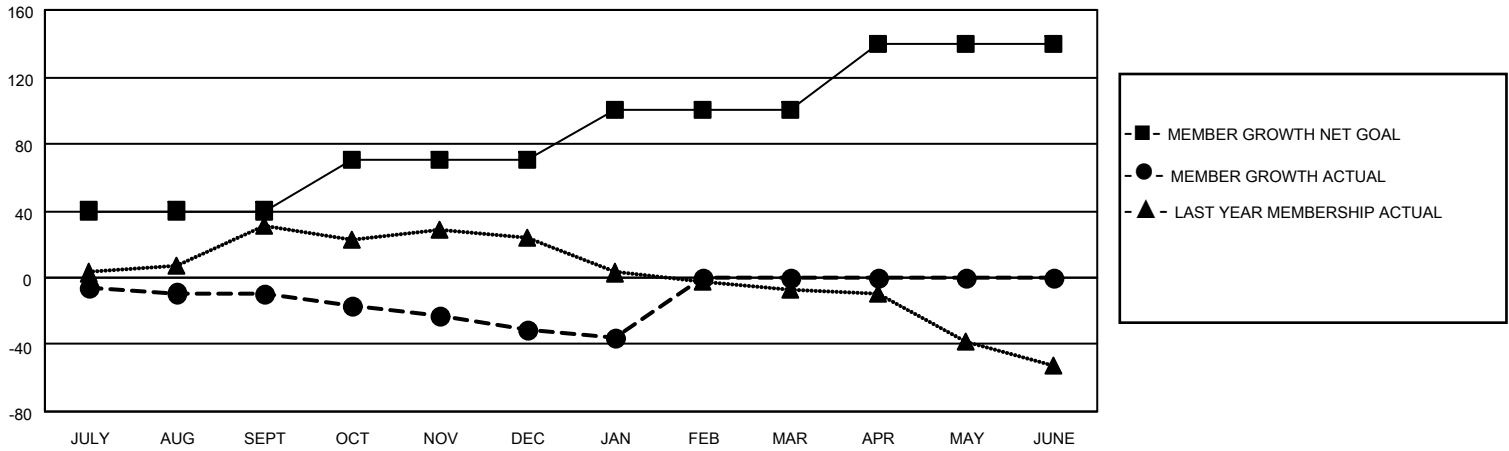
| Clubs | | | |
|-----------------------|---------------|-----------|---------------|
| RESULTS FOR 2020-2021 | | | |
| QUARTER | NEW CLUB GOAL | NEW CLUBS | DROPPED CLUBS |
| JULY/AUG/SEPT | 0 | 0 | 0 |
| OCT/NOV/DEC | 2 | 1 | 1 |
| JAN/FEB/MAR | 0 | 0 | 0 |
| APR/MAY/JUNE | 0 | 0 | 0 |

| Members | | | |
|-----------------------|------------------------|----------------------|---|
| RESULTS FOR 2020-2021 | | | |
| QUARTER | MEMBER GROWTH NET GOAL | MEMBER GROWTH ACTUAL | DROPPED MEMBERS ACTUAL (including transfers) |
| JULY/AUG/SEPT | 40 | 18 | 25 |
| OCT/NOV/DEC | 30 | 33 | 53 |
| JAN/FEB/MAR | 30 | 7 | 11 |
| APR/MAY/JUNE | 40 | 0 | 0 |

GOALS AND ACTUAL NEW CLUBS CUMULATIVE



GOALS AND ACTUAL MEMBERS CUMULATIVE



| | |
|------------------|-----------|
| DROPPED CLUBS: 1 | |
| DROPPED MEMBERS | |
| DECEASED | 16 |
| CLUB CANCELLED | 10 |
| OTHER | 63 |
| TOTAL | 89 |

19 CLUBS OF 52 ADDED 1 OR MORE NEW MEMBERS

[CLICK HERE FOR CUMULATIVE MEMBERSHIP DATA](#)

| <u>GENDER DISTRIBUTION</u> | |
|----------------------------|----------------|
| MALE | 1,241 (73.13%) |
| FEMALE | 456 (26.87%) |

| | |
|---------------------------------|-----|
| TOTAL FAMILY UNIT MEMBERS | 292 |
| FAMILY MEMBERS PAYING HALF DUES | 148 |